

# DURDEN & HUNT

INTERNATIONAL



## Grasmere Close, Loughton IG10

£1,150,000

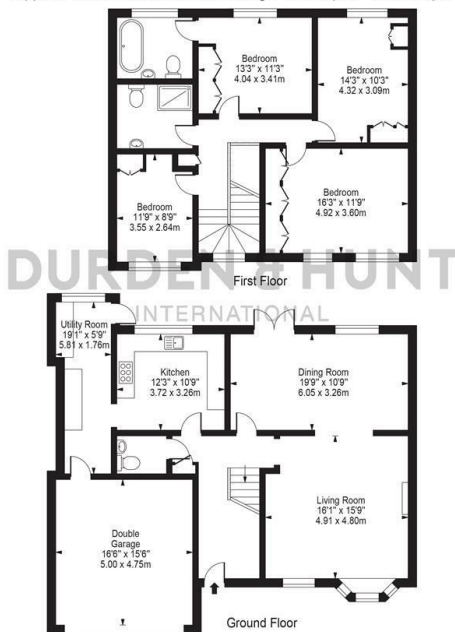
- Spacious Living Room With Linked Dining Area
- Master Bedroom With Luxury En Suite And Fitted Wardrobes
- Garden With Patio Area
- Excellent Transport Links
- Contemporary Kitchen With Separate Utility Space
- Three Additional Bedrooms All With Fitted Wardrobes
- Driveway
- Modern Downstairs WC
- Family Shower Room
- Double Garage

309 High Road, Loughton, Essex, IG10 1AL  
0203 026 0160

[loughton@durdenandhunt.co.uk](mailto:loughton@durdenandhunt.co.uk)  
<https://www.durdenandhunt.co.uk/>



Grasmere Close  
 Approx. Total Internal Area 2072 Sq Ft - 192.52 Sq M  
 (Including Garage)  
 Approx. Gross Internal Area Of Garage 256 Sq Ft - 23.75 Sq M



For Illustration Purposes Only - Not To Scale

This floor plan should be used as a general outline for guidance only and does not constitute in whole or in part an offer or contract. Any intending purchaser or lessee should satisfy themselves by inspection, searches, enquiries and full survey as to the correctness of each statement. Any areas, measurements or distances quoted are approximate and should not be used to value a property or be the basis of any sale or let.

# Viewings

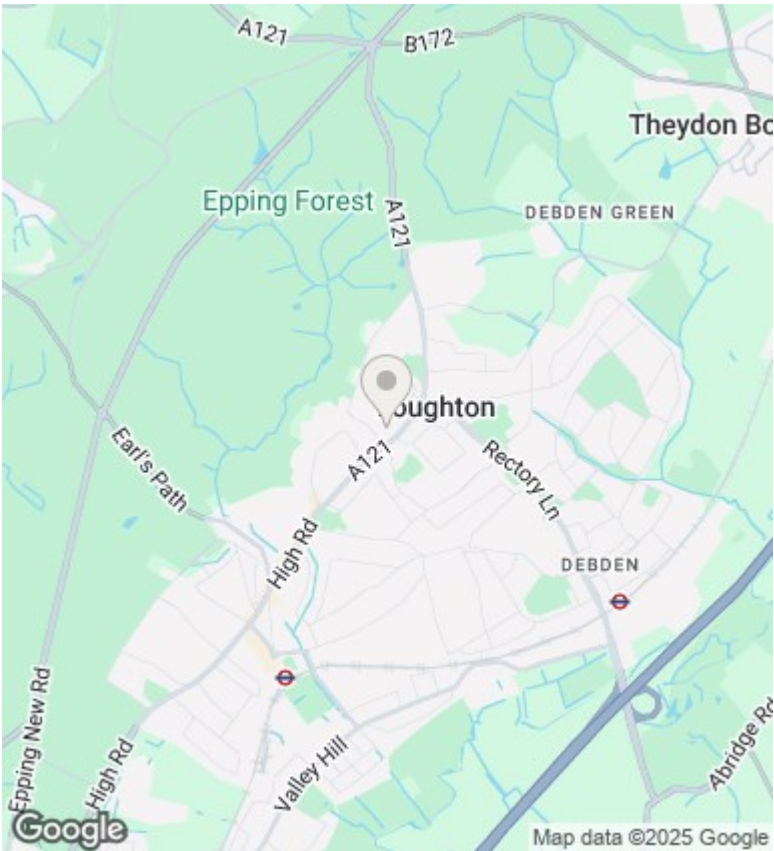
Viewings by arrangement only. Call 0203 026 0160 to make an appointment.

## Council Tax Band

G

## EPC Rating:

D



Energy Efficiency Rating		
	Current	Potential
Very energy efficient - lower running costs		
(92 plus) <b>A</b>		
(81-91) <b>B</b>		<b>81</b>
(69-80) <b>C</b>		
(55-68) <b>D</b>	<b>60</b>	
(39-54) <b>E</b>		
(21-38) <b>F</b>		
(1-20) <b>G</b>		
Not energy efficient - higher running costs		
<b>England &amp; Wales</b>	EU Directive 2002/91/EC	